


North Lanarkshire projects

- Drumpellier Gateway project
- Frankfield Loch Local Nature Reserve
- Trails and strategic routes
- Peatlands and wetlands
- Pollinators and pearls
- Glenboig Life Centre Gateway (non-NLC)



Drumpellier Gateway project

Aims:

- To develop Drumpellier Country Park as a gateway to the Seven Lochs Wetland Park
- To increase involvement in heritage related activities

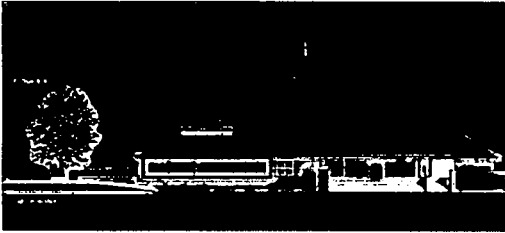
The project aims will be achieved through four key programmes of activity.



1. Visitor Centre enhancements



1. Visitor Centre enhancements



1. Visitor Centre enhancements

Building improvements:

- Extension creating lochside viewing area
- Opening western facade to link to public square
- Replacement of glazing with attractive and efficient double glazing
- Interior redecoration



1. Visitor Centre enhancements



1. Visitor Centre enhancements

Landscape improvements:

- Stepped seating area created at public square
- Lochside terrace level raised to visitor centre floor level for completely level access
- Improved approach to main entrance



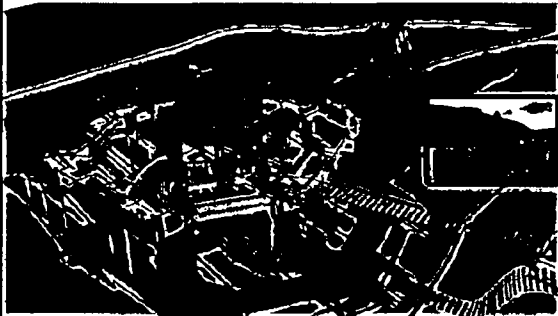
1. Visitor Centre enhancements

Interpretation:

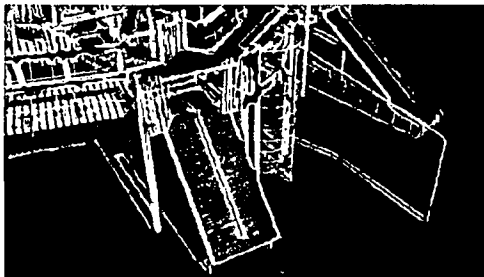
- Interactive multimedia central feature in visitor centre
- Bird-watching feature in new viewing area
- Stereoscope viewer on terrace
- Integrated interpretation
- Portable exhibition/education kit



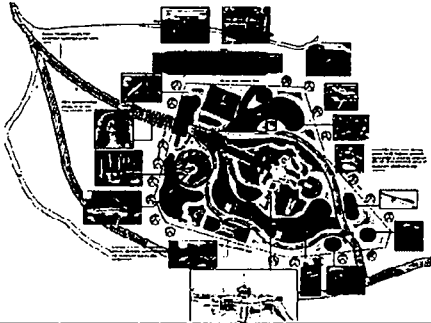
2. Interactive interpretation around Lochend Loch



2. Interactive interpretation around Lochend Loch

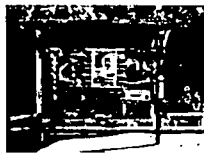


2. Interactive interpretation around Lochend Loch



2. Interactive interpretation around Lochend Loch

- Crannog-themed interactive play area
- Enhanced welcome signage
- Car-park orientation points



3. Habitat enhancements

- Floating nest platforms
- Planting a willow copse
- Wildflower meadow creation
- Bird and bat boxes
- Wildlife surveying and recording

Mainly delivered through a volunteer programme.



4. Community engagement and learning programme

- Expanded events programme to take advantage of new facilities, e.g.
 - Traditional iron-age lifestyle experiences
 - Walking tours
 - Natural play
- Self-led experiences
- New education resources



Timeline

- Permission to start – estimated summer 2016
- Crannog play-area completed by March 2017
- Visitor centre works – September 2018 to April 2019
- Interpretation – phased installation from 2018-2020

Information session

- Public information session in Drumpellier Visitor Centre
- Saturday 23 January, 12pm-4pm
- Proposals on display and opportunity to give feedback
- Also available online from tomorrow for 2 weeks